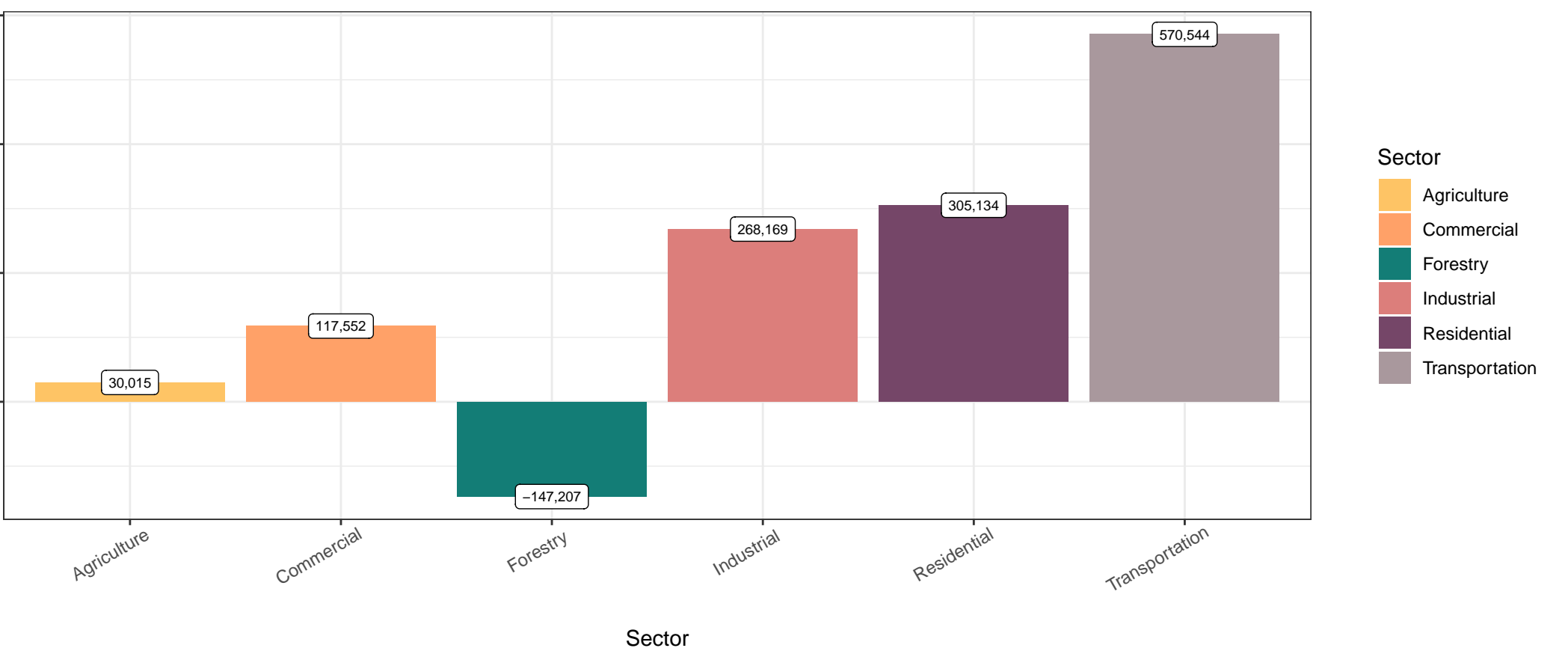




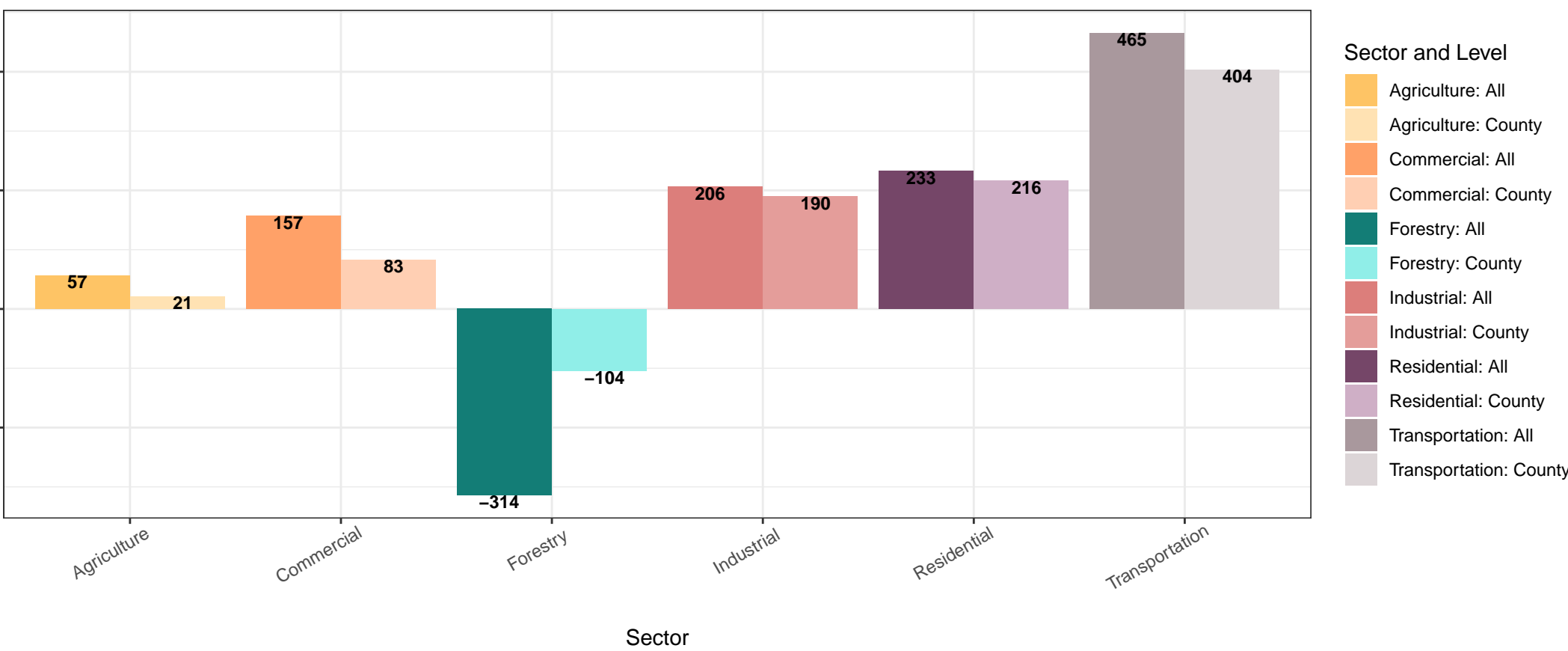
Newton County Annual GHG Emissions for 2022

This chart depicts carbon dioxide equivalent (CO2e) emissions, measured in metric tons, for the previous year broken down by sector. Negative emissions indicate the presence of carbon uptake within a sector.



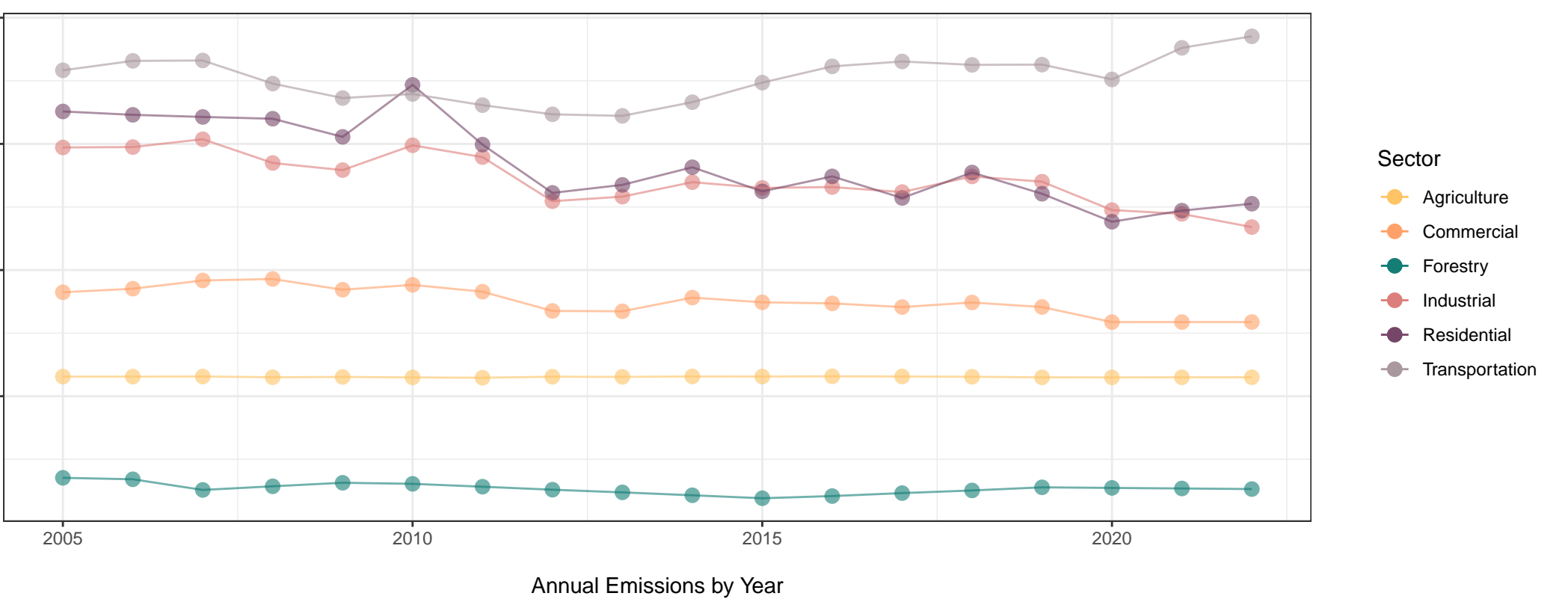
Newton County GHG Emissions for 2022 per 1,000 people

This chart depicts average monthly CO2e emissions, measured in metric tons, per 1,000 people for the previous year by sector, compared to the statewide level per 1,000 people. Negative emissions indicate the presence of carbon uptake.



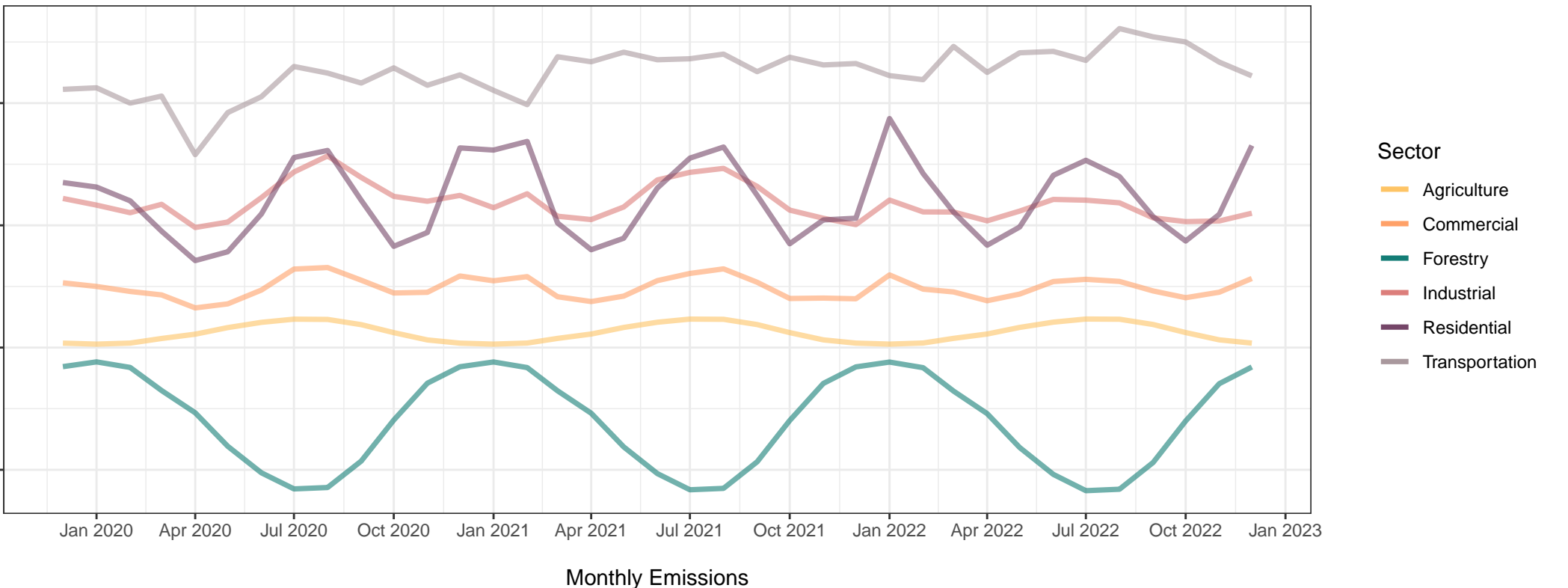
Newton County Yearly Emissions from 2005 to 2022

This graph depicts CO2e emissions, measured in metric tons, by sector by year for every year dating back to 2005. By grouping yearly emissions together, we can examine emissions trends over time.



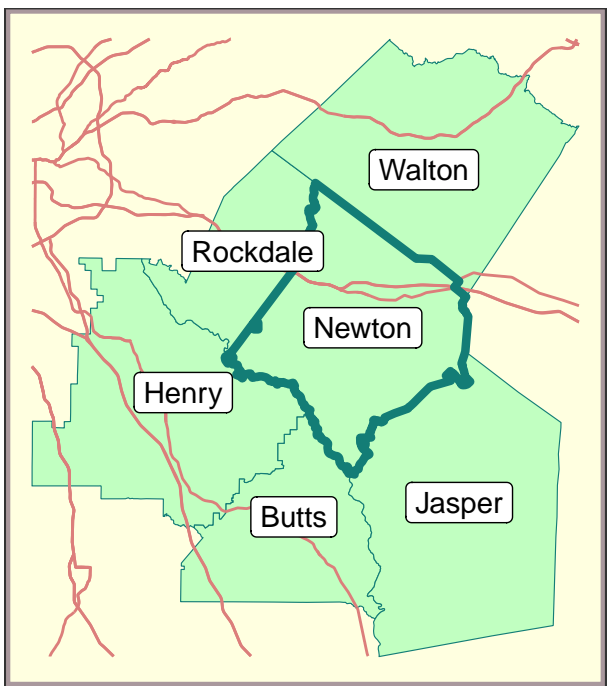
Newton County Monthly Emissions for Most Recent Three Years Ending in December 2022

This figure depicts CO2e emissions, measured in metric tons, by sector for the most recent three years. With this view, we can evaluate recent emissions trends. Some seasonal variation is anticipated across sectors, including agriculture and forestry (due to cyclical growing seasons) and residential (due to heating and cooling demands).



Newton County with Five Nearest Neighbors

This map depicts Newton County and its five nearest neighboring counties.



Neighbor County Comparison

This table compares the main county's emissions from the previous year with its five nearest neighbor counties. The numbers represent metric tons of CO2e per 1,000 persons. We display the data this way so counties with different population levels can be compared to one another. The worst emissions levels per sector are denoted in pink, while the best emissions levels per county are denoted in teal.

Sector	Newton	Butts	Henry	Jasper	Rockdale	Walton
Agriculture	254.78	627.40	38.95	3210.83	22.17	334.76
Commercial	998.24	1382.18	1599.91	608.47	1765.44	1043.83
Forestry	-1249.47	-4530.41	-561.04	-17968.89	-696.89	-2554.54
Industrial	2277.43	122.65	755.12	1774.06	3493.51	1347.14
Residential	2591.56	2908.27	2745.20	3138.97	2798.37	2997.71
Transportation	4844.65	7751.58	5559.01	5341.03	6132.13	4427.05
Total	9717.18	8261.71	10137.17	-3895.53	13514.74	7595.97